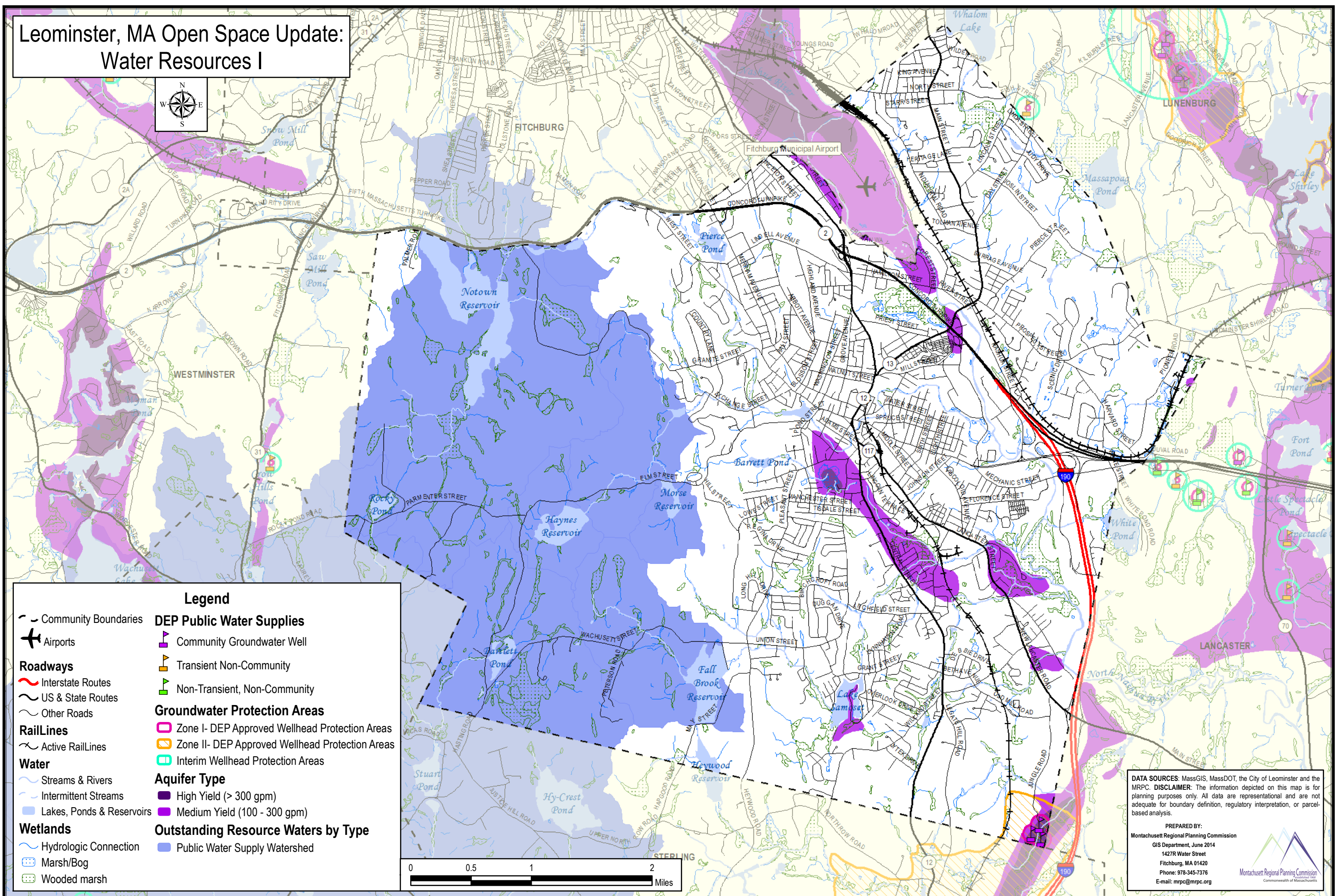
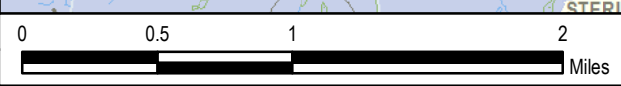


# Leominster, MA Open Space Update: Water Resources I



**Legend**

<ul style="list-style-type: none"> <li>Community Boundaries</li> <li>Airports</li> <li><b>Roadways</b> <ul style="list-style-type: none"> <li>Interstate Routes</li> <li>US &amp; State Routes</li> <li>Other Roads</li> </ul> </li> <li><b>RailLines</b> <ul style="list-style-type: none"> <li>Active RailLines</li> </ul> </li> <li><b>Water</b> <ul style="list-style-type: none"> <li>Streams &amp; Rivers</li> <li>Intermittent Streams</li> <li>Lakes, Ponds &amp; Reservoirs</li> </ul> </li> <li><b>Wetlands</b> <ul style="list-style-type: none"> <li>Hydrologic Connection</li> <li>Marsh/Bog</li> <li>Wooded marsh</li> </ul> </li> </ul>	<ul style="list-style-type: none"> <li><b>DEP Public Water Supplies</b> <ul style="list-style-type: none"> <li>Community Groundwater Well</li> <li>Transient Non-Community</li> <li>Non-Transient, Non-Community</li> </ul> </li> <li><b>Groundwater Protection Areas</b> <ul style="list-style-type: none"> <li>Zone I- DEP Approved Wellhead Protection Areas</li> <li>Zone II- DEP Approved Wellhead Protection Areas</li> <li>Interim Wellhead Protection Areas</li> </ul> </li> <li><b>Aquifer Type</b> <ul style="list-style-type: none"> <li>High Yield (&gt; 300 gpm)</li> <li>Medium Yield (100 - 300 gpm)</li> </ul> </li> <li><b>Outstanding Resource Waters by Type</b> <ul style="list-style-type: none"> <li>Public Water Supply Watershed</li> </ul> </li> </ul>
--	---



**DATA SOURCES:** MassGIS, MassDOT, the City of Leominster and the MRPC. **DISCLAIMER:** The information depicted on this map is for planning purposes only. All data are representational and are not adequate for boundary definition, regulatory interpretation, or parcel-based analysis.

PREPARED BY:  
 Montachusett Regional Planning Commission  
 GIS Department, June 2014  
 1427R Water Street  
 Fitchburg, MA 01420  
 Phone: 978-345-7376  
 E-mail: mrpc@mrpc.org