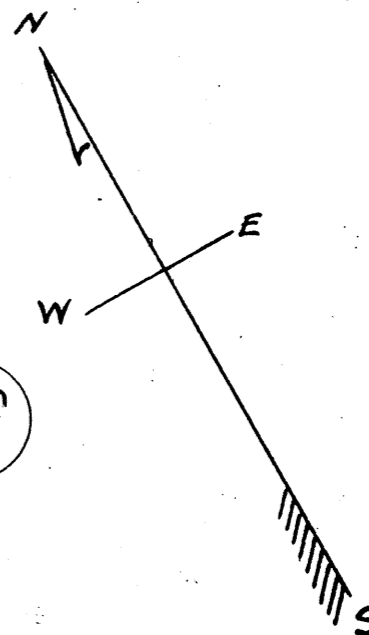
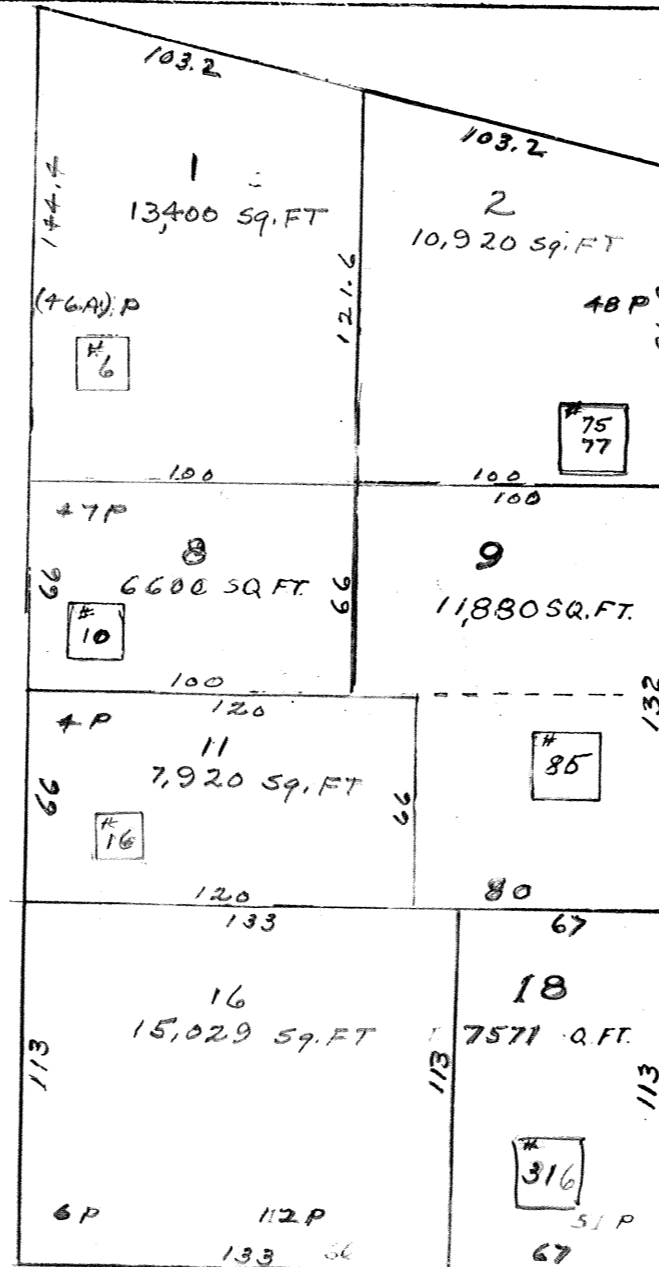
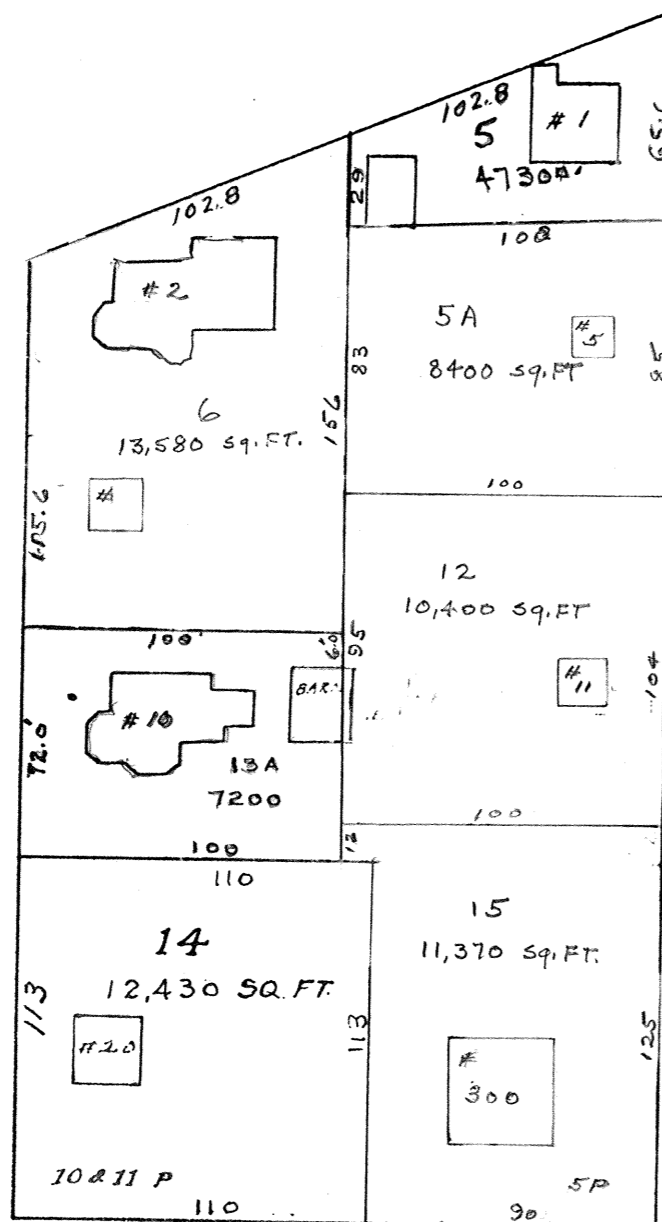


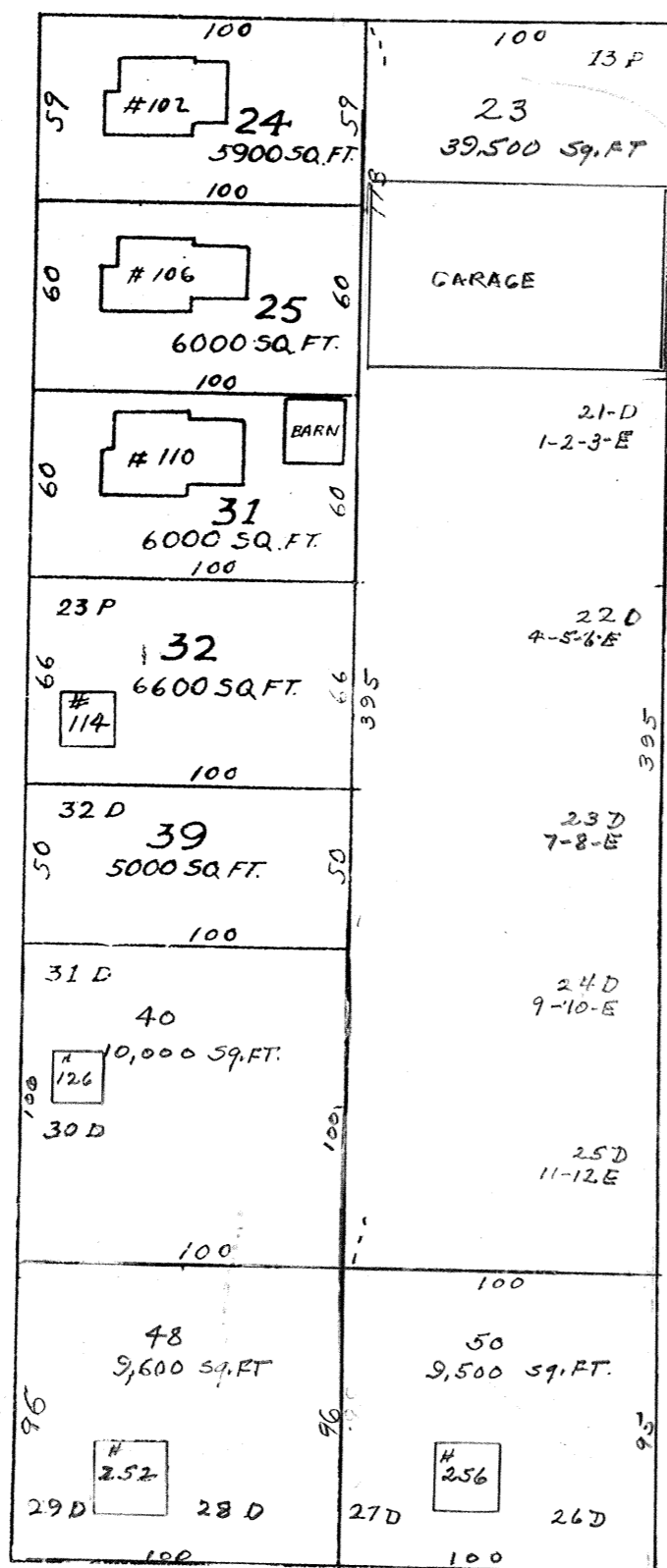
136



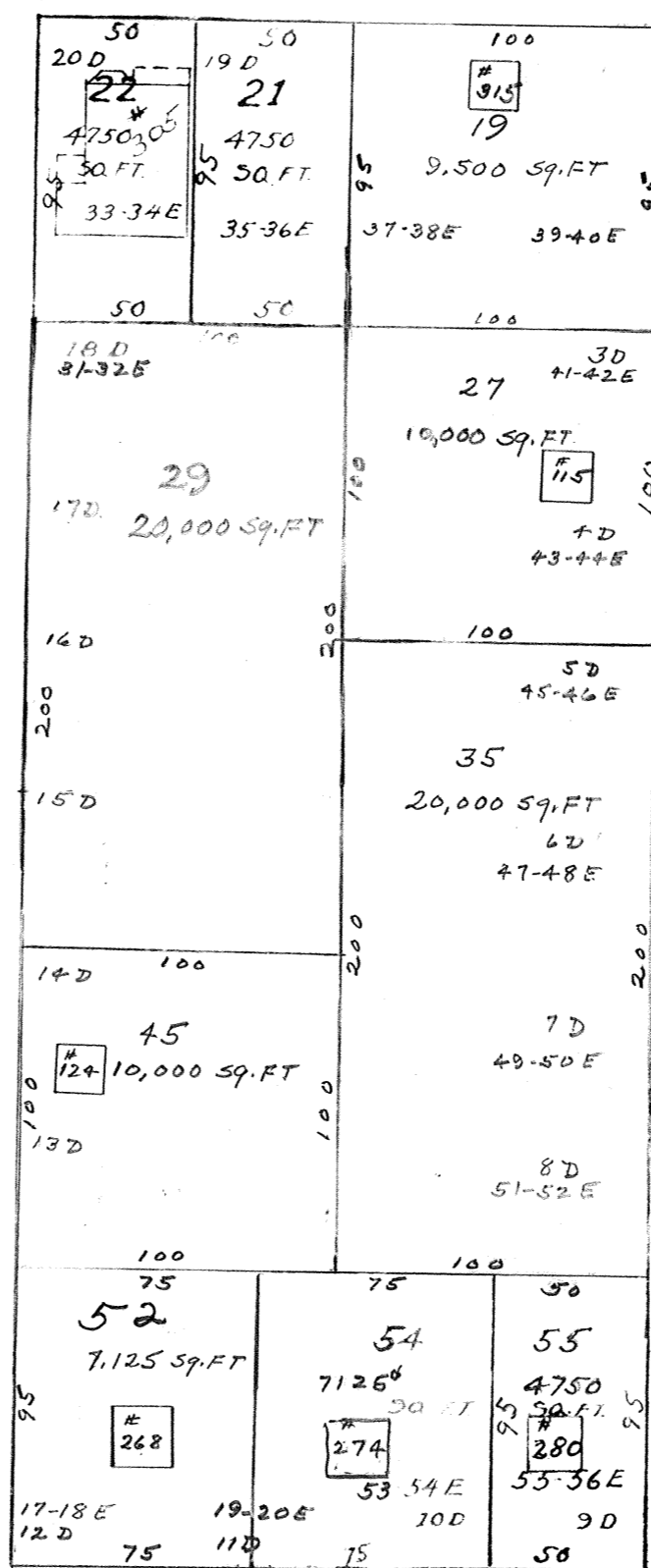
137

WATER ST

EIGHTH ST.



NINTH ST



TENTH ST.

139

NOTE: - THE SMALL NUMBERS FOLLOWED THE LETTER "P" SHOW THE LOT NUMBERS ACCORDING TO HARRY L. PIERCE PLAN, IN 1907 RECORDED FILE NO. 171

THE SMALL NUMBERS FOLLOWED BY THE LETTER "D" SHOW THE LOT NUMBERS ACCORDING TO DERBY AND SHAPLEY PLAN IN 1907. RECORDED FILE NO. 149

THE SMALL NUMBERS FOLLOWED BY THE LETTER "E" SHOW THE LOT NUMBERS ACCORDING TO THE DERBY PLAT OWNED BY THE EAGLE REALTY CO. RECORDED FILE NO.

136

160

SPRUCE ST.